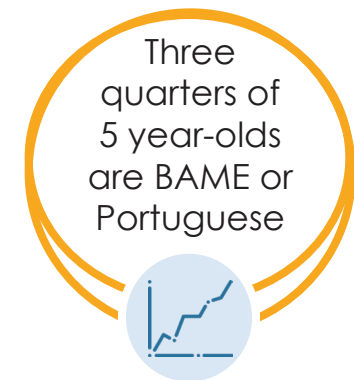
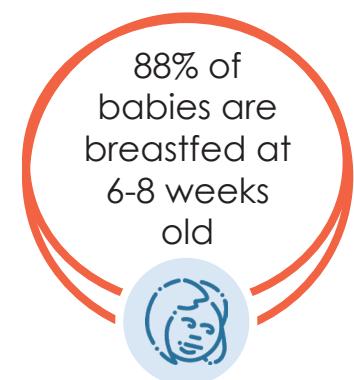
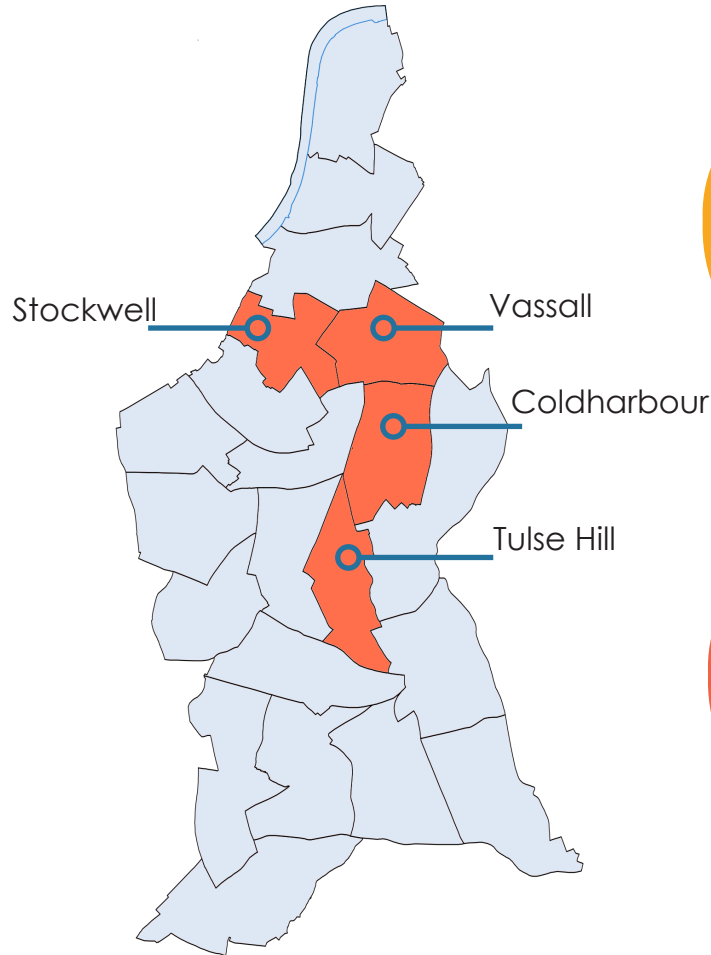


Early years at a glance

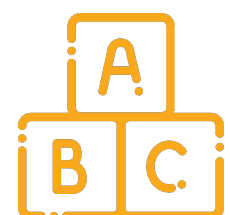
LEAP



LEAP's local population



Lambeth Early Action Partnership (LEAP) is an innovative programme to better the lives of thousands of children in the Lambeth community, focusing on the four wards of Stockwell, Coldharbour, Vassall and Tulse Hill.

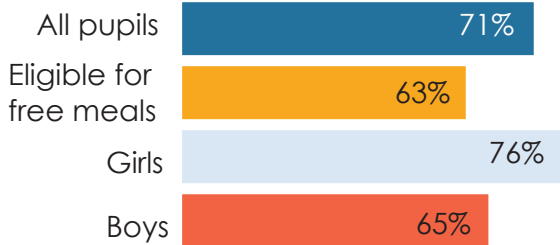


Early years at a glance

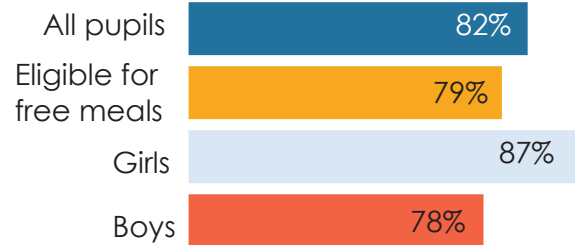
LEAP



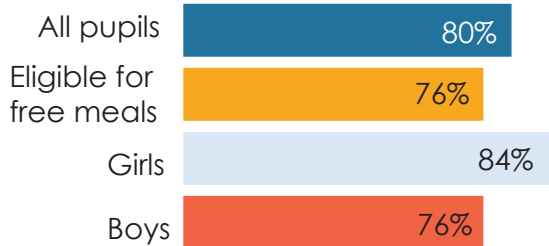
Outcomes for children in the LEAP area



Good level of overall development at age 5



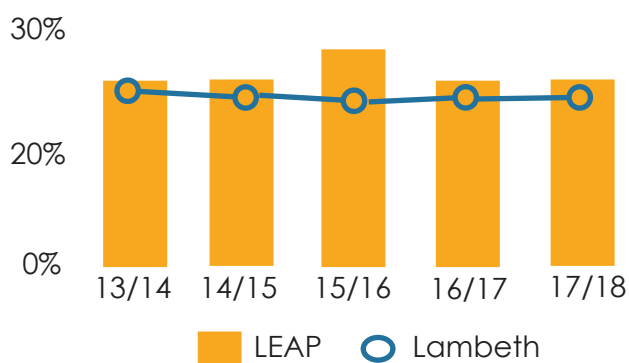
Good level of social and emotional development age 5



Good level of communication and language development age 5



More than 1 in 4 children are overweight or obese at school entry



Overweight and obese children at school entry



43% of 11 year olds are overweight or obese